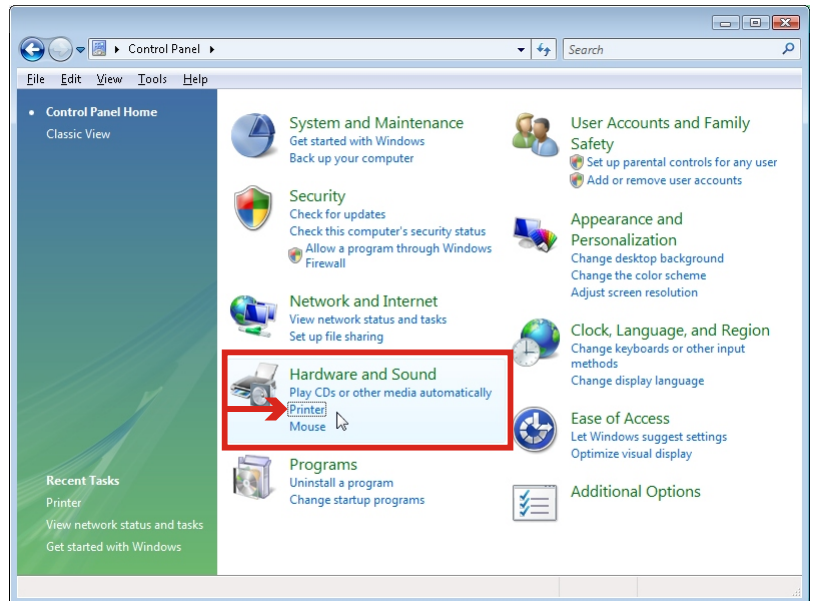
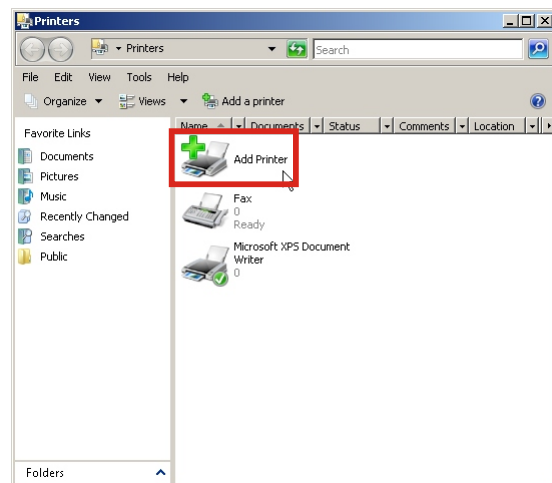


Installing a printer driver in Windows Vista

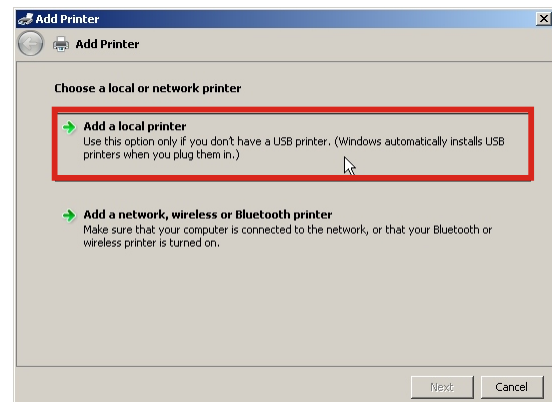
In Control Panel, select "Printers".



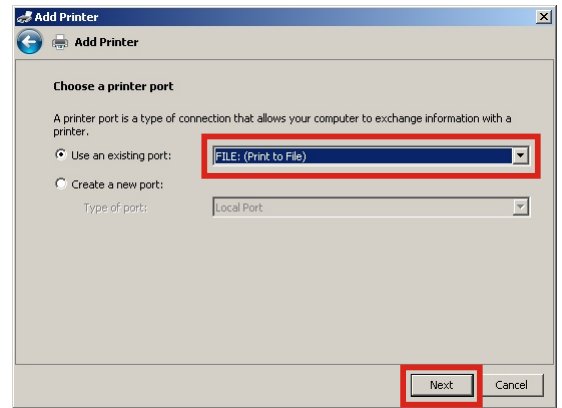
Select "Add Printer".



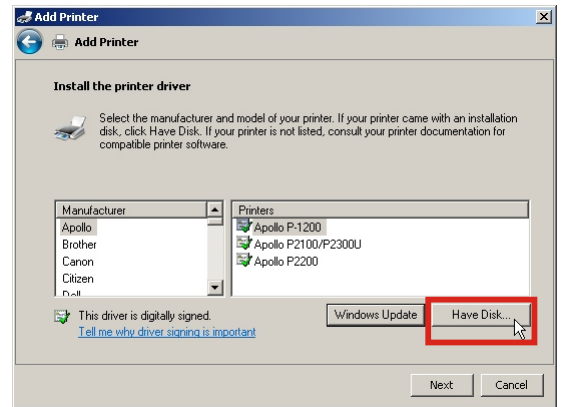
Select "Add a Local Printer".



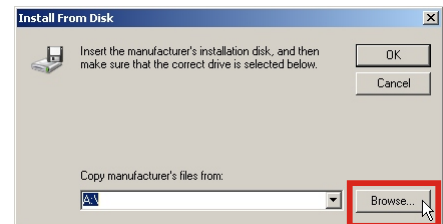
Select "Use an existing port" and choose "FILE: (Print to File)" from the pull-down menu, then click "Next".



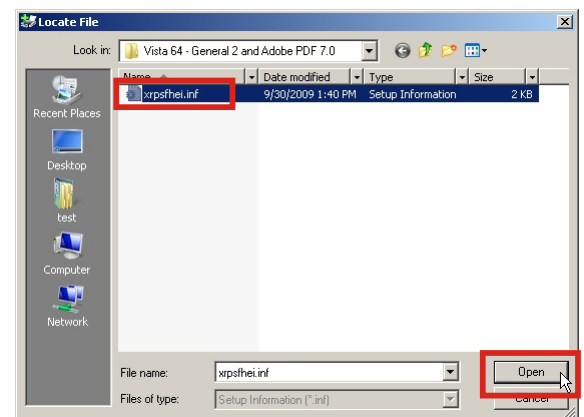
Click "Have Disk...".



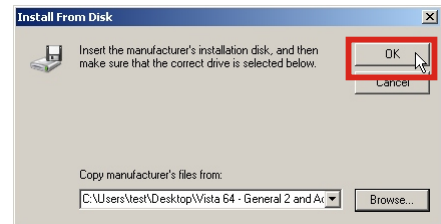
Click "Browse...".



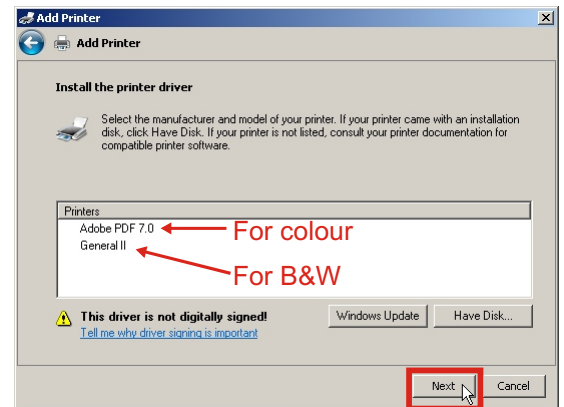
Browse to the location of xrpcshel.inf which can be found in the folder into which you extracted the contents of the zip file, then click "Open".



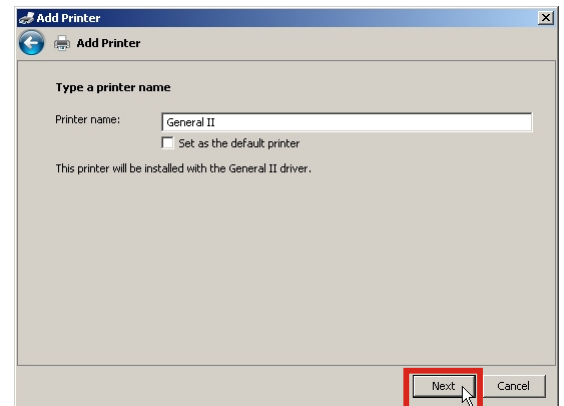
Click "OK".



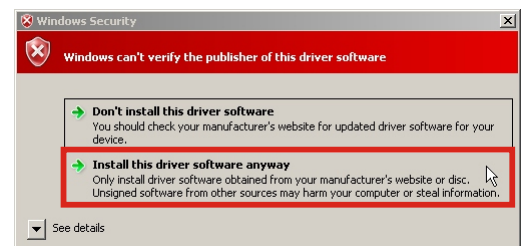
Select the appropriate printer.
For colour, choose "Adobe PDF 7.0"
(Note that this will create Postscript files as opposed to PDF files) or for black and white, choose "General II".



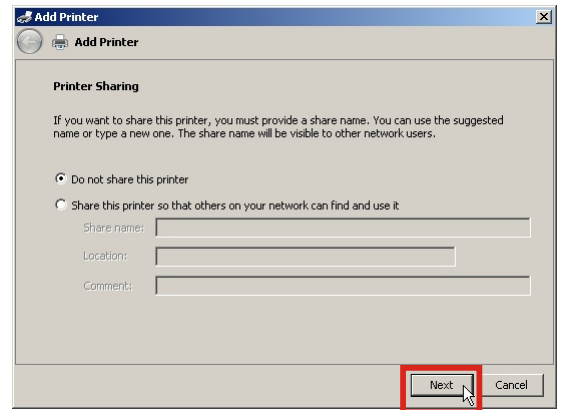
Click "Next".



You may see a security warning stating that the publisher of the driver could not be verified. Just click "Install this driver software anyway".



Click "Next".



Click "Finish".

