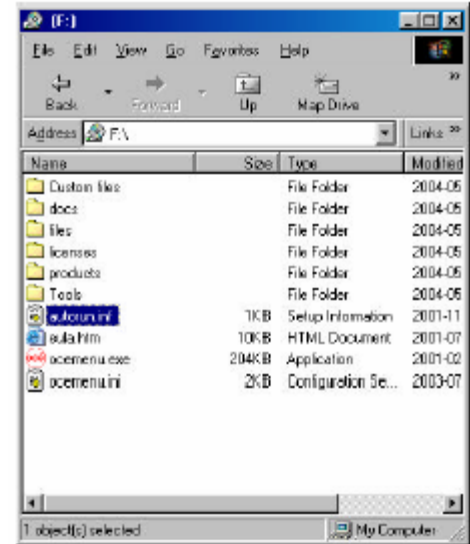
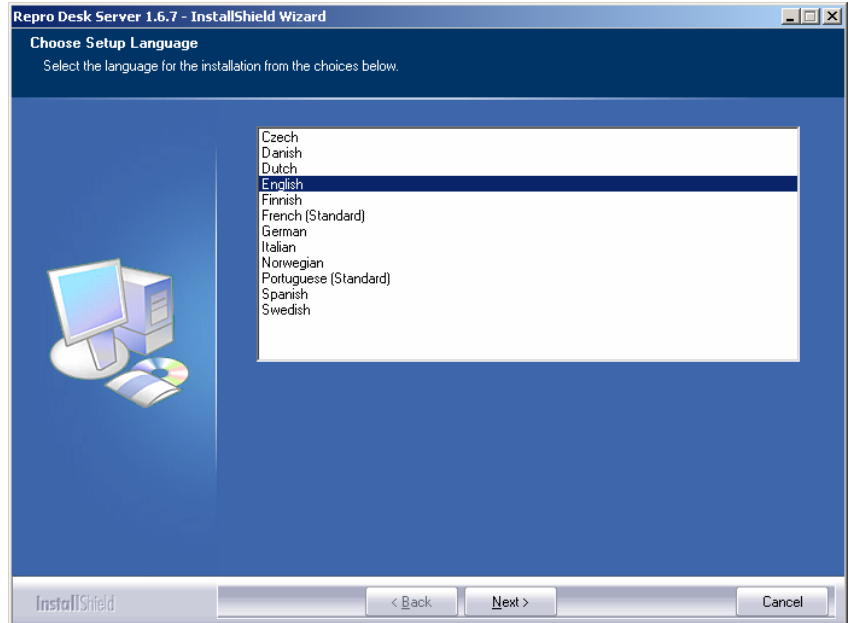


Installing Reprodesk 1.67

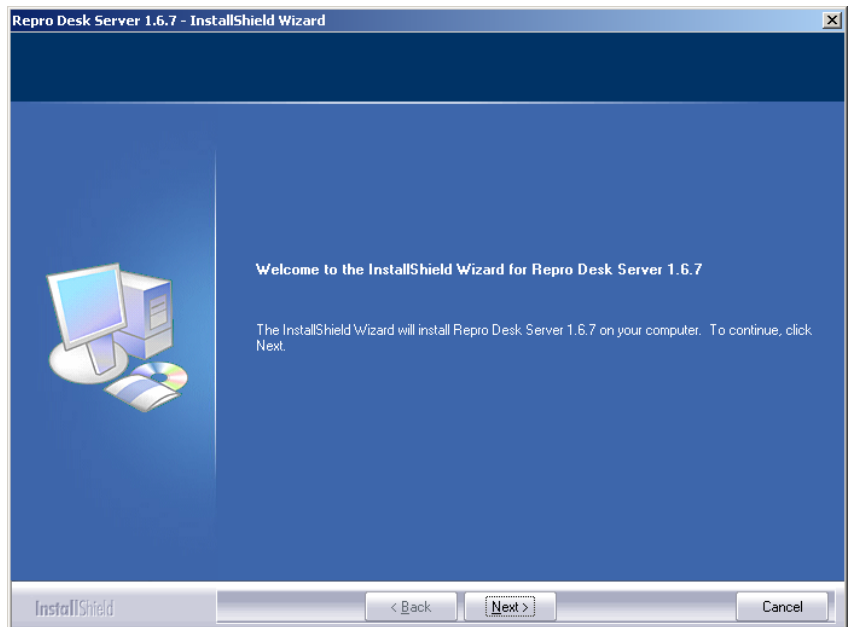
1. Insert the Reprodesk 1.67 CD into your CD ROM drive. If the installer does not run automatically, then browse to your CD ROM drive, and double-click the application called "ocemenu.exe"



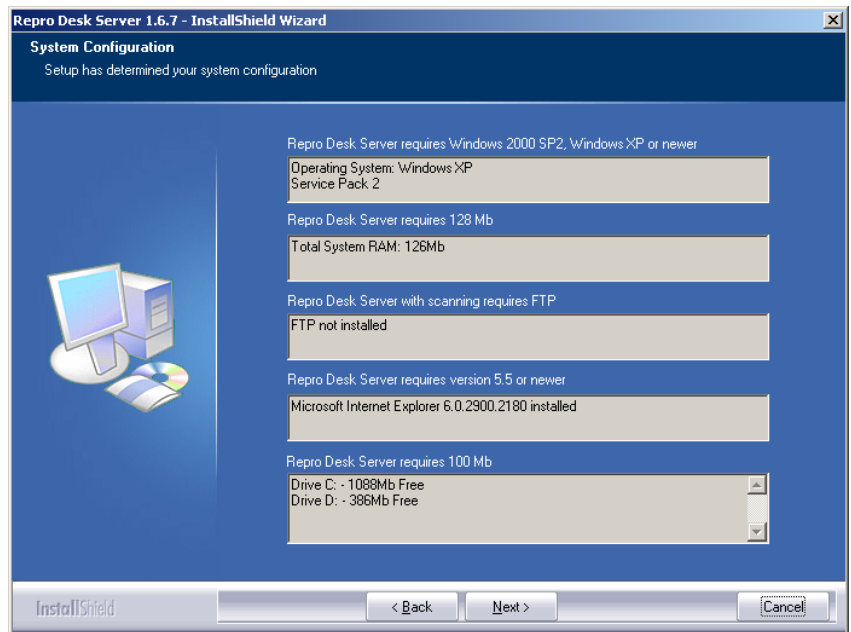
2. Select a language and click "OK" to begin the installation process.



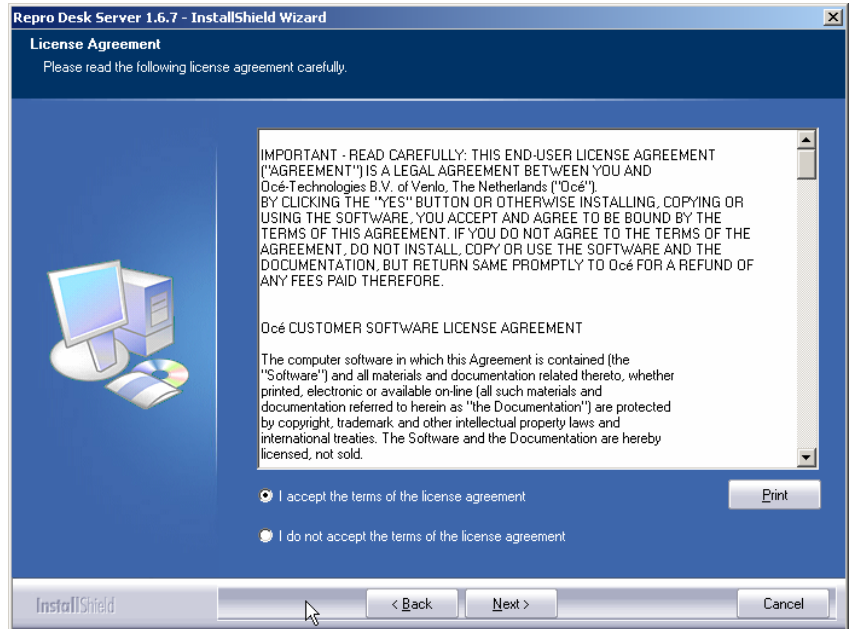
3. This is the welcome screen for the installation program. Click "Next" to continue.



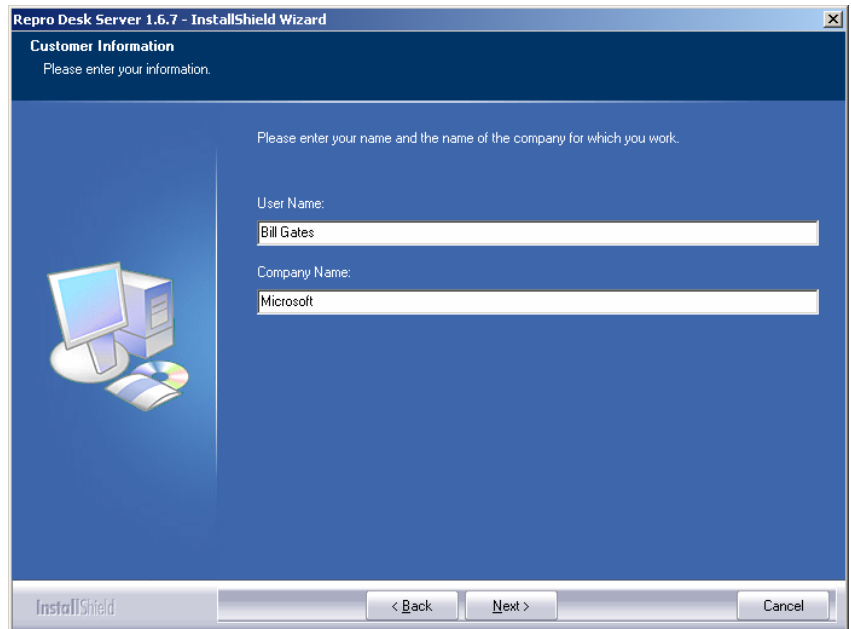
4. Verify that your computer meets the minimum hardware and software requirements. Reprodesk Remote (which is the version you will be installing) requires Windows 98 or newer, 128 MB RAM, Internet Explorer 6.0 or newer, and 100 MB of free hard disk space. Click “Continue” to proceed.



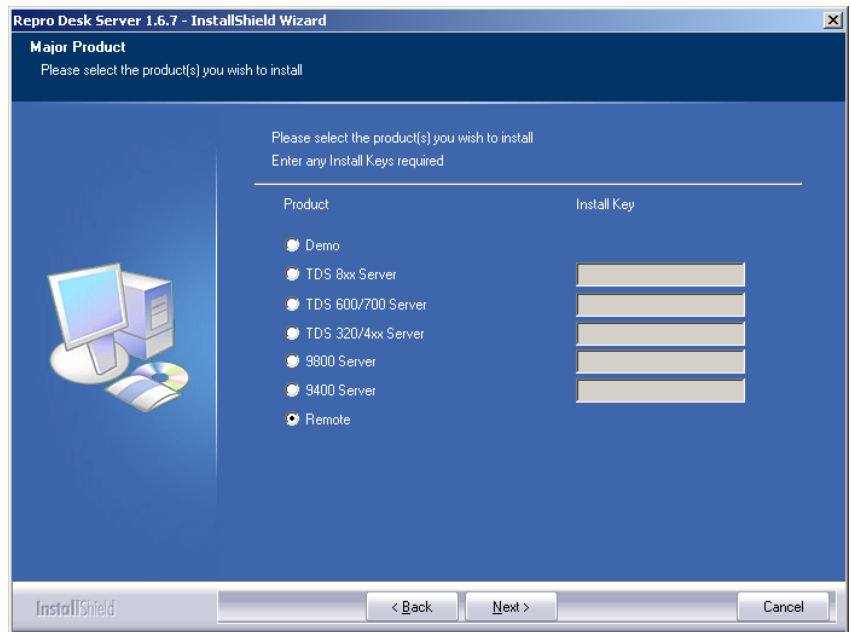
5. Accept the conditions of the license agreement by clicking “Yes”.



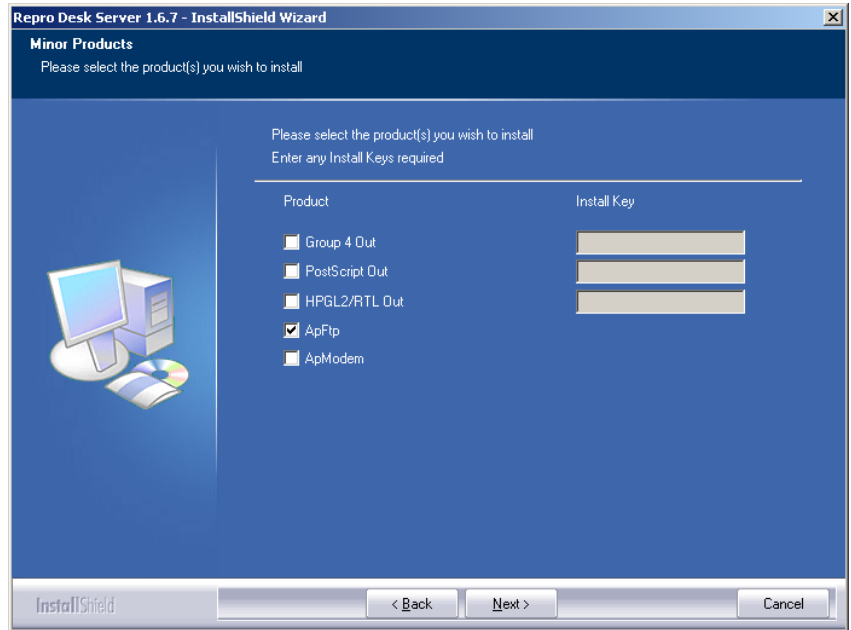
6. Enter a user name & company name and click “Next” to continue.



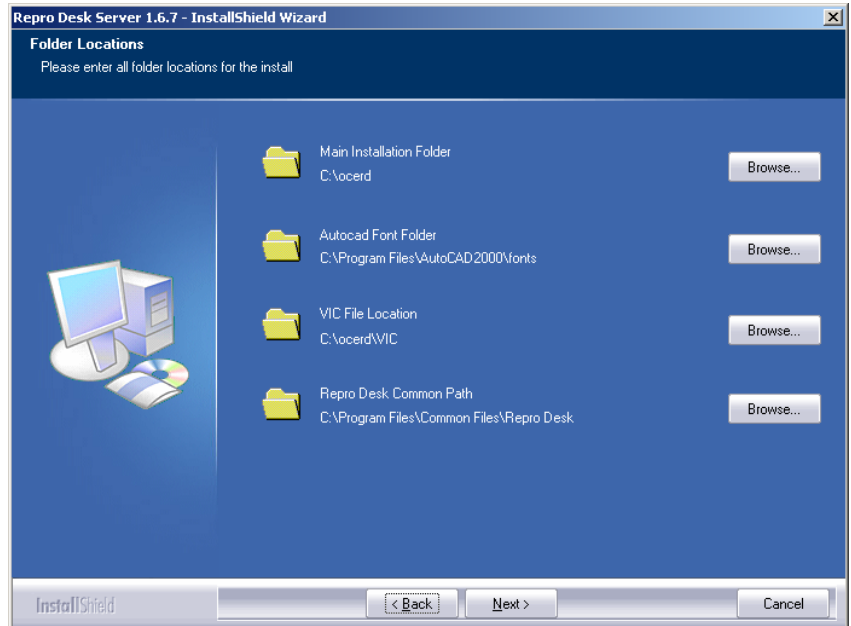
7. Click the radio button next to “Remote” and click “Next” to continue.



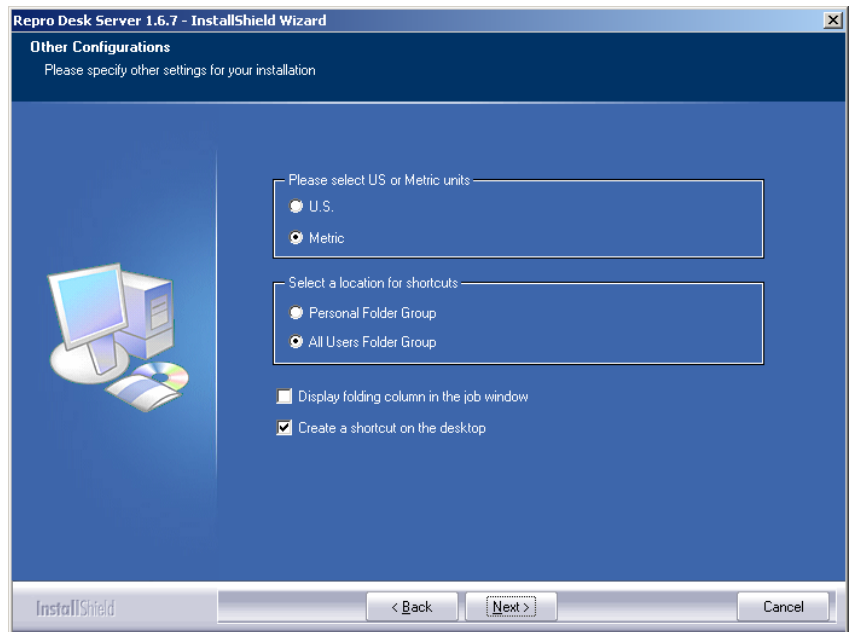
8. The only product you need to install is ApFtp.



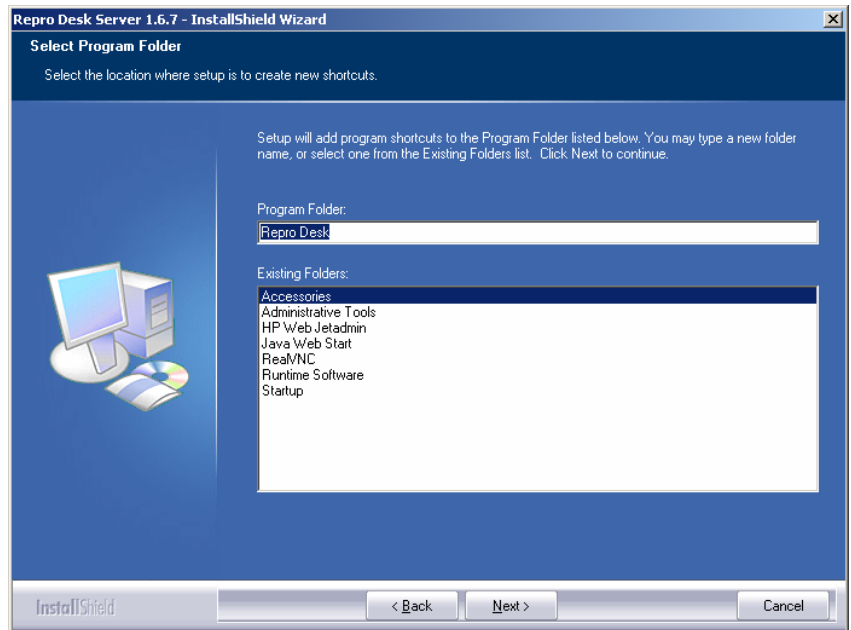
9. Confirm the folder locations in which Repr Desk is to be installed. The default values are usually fine.



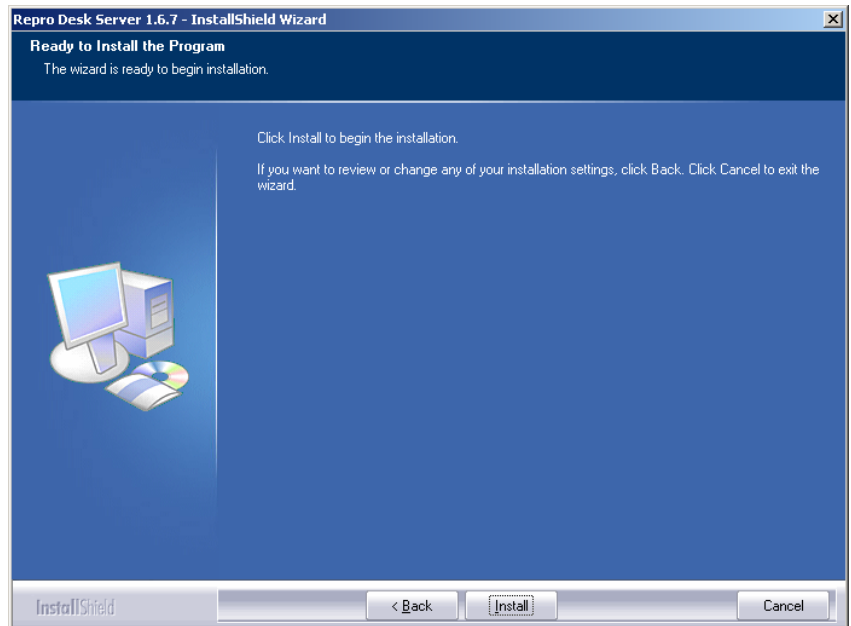
10. You can now specify which units will be used by default. Note that this can also be changed after the installation. **“Display folding column in the job window” should not be checked.** You can place a check mark beside “Create a shortcut on the desktop” if desired. Click “Next” to continue.



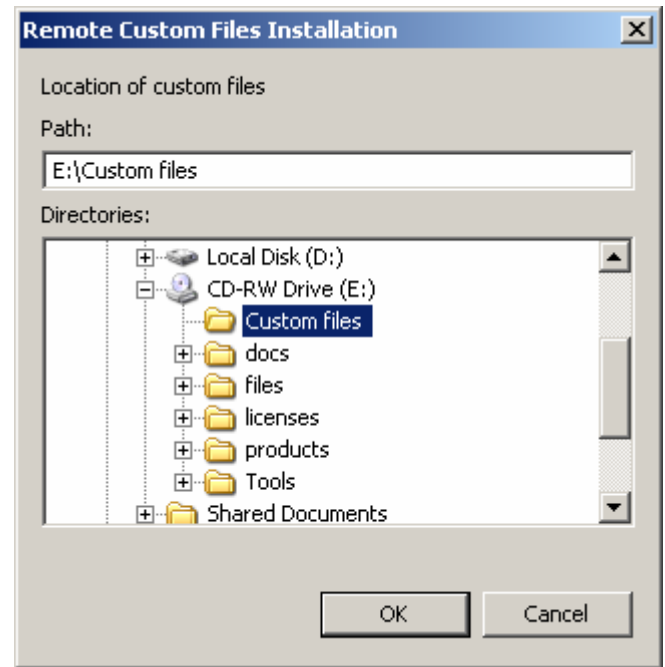
11. This window asks you to specify the name of the program folder that will be accessible from the Start menu. Just click “Next” to continue.



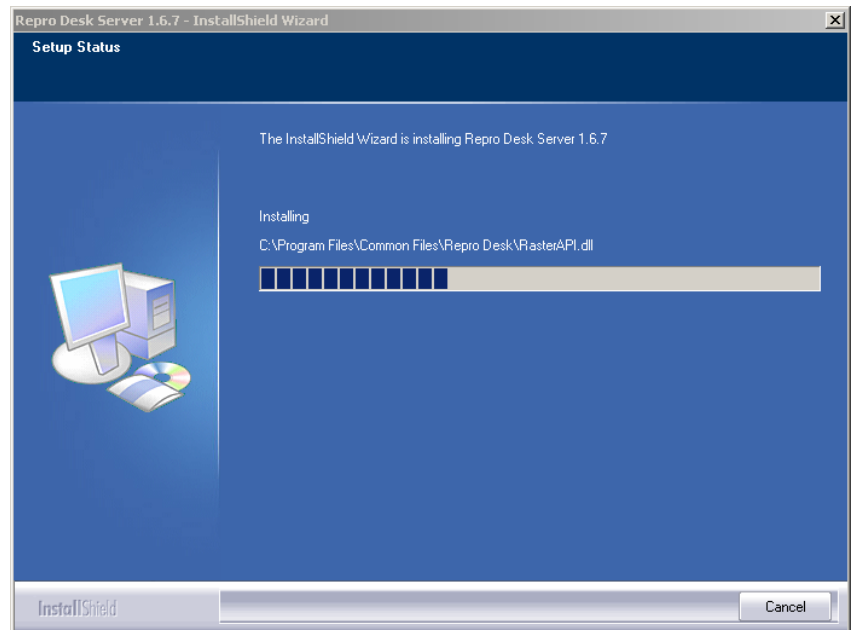
12. This is the installation verification screen. Click “Next” to continue.



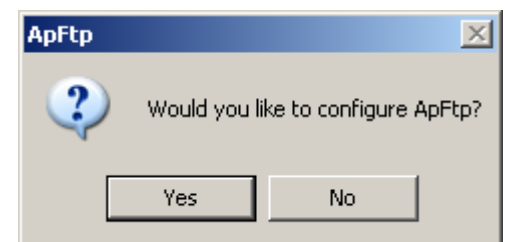
13. You are now prompted to specify the location of the Reprodesk custom files. These files define the appearance of the order form and FTP parameters for transferring orders. You must browse to your CD ROM drive, click the “+” symbol to the left of it in order to display its contents and highlight the folder called “Custom files”. Click “OK” to continue.



14. A progress bar will be displayed while the files are being installed...



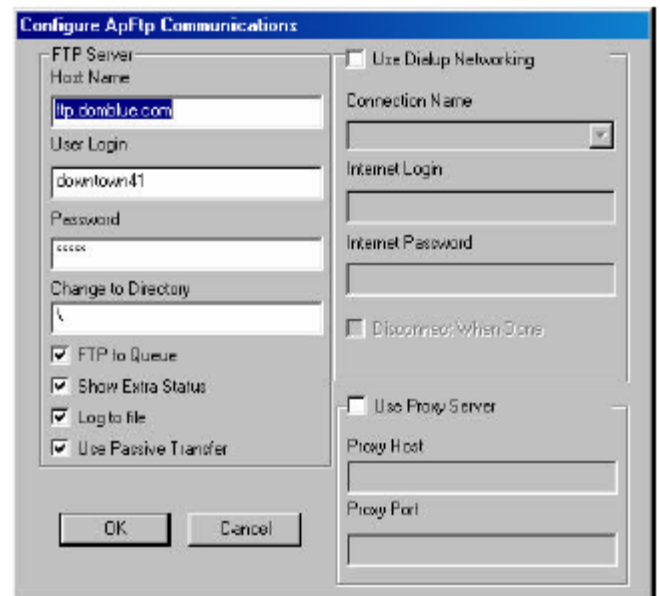
15. You are asked if you would like to configure ApFtp. Click “Yes” to continue.



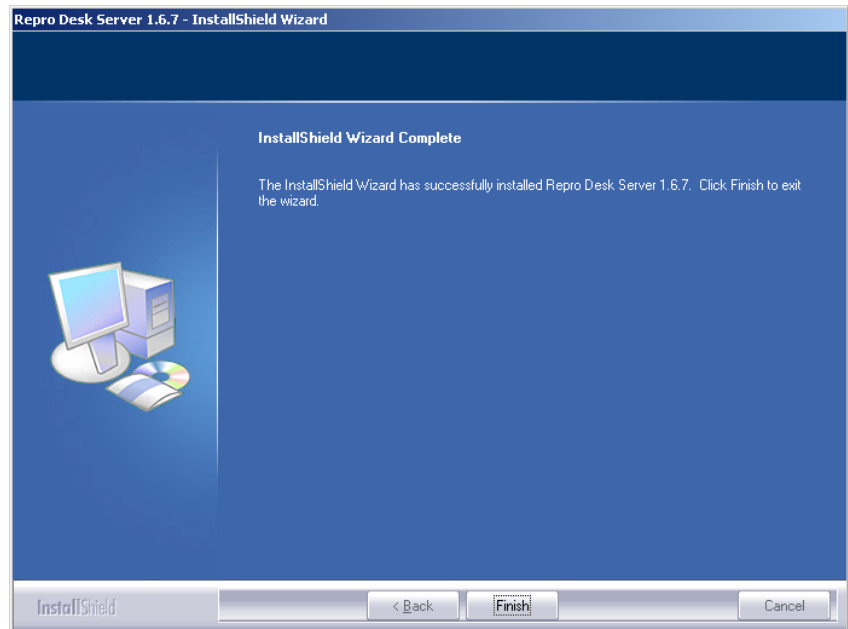
16. Verify that ApFtp is configured as shown here. Note: the password is never displayed.

Host Name is “ftp.dombblue.com”,
User Login is “downtown41”,

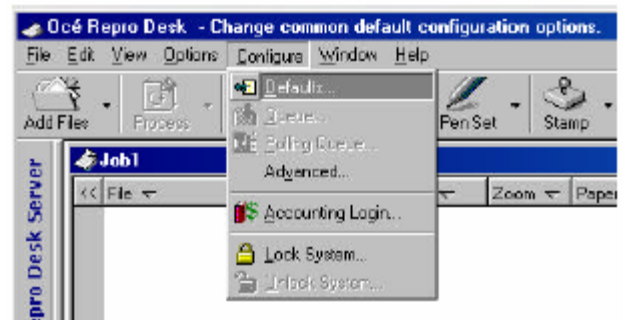
Password is “hell0” (with a ZERO instead of the letter “O”), Change to Directory is “\” and there should be checkmarks beside FTP to Queue, Show Extra Status, Log to file, and Use Passive Transfer. Items on the right hand side of the window should be left blank. Click “OK” to continue.



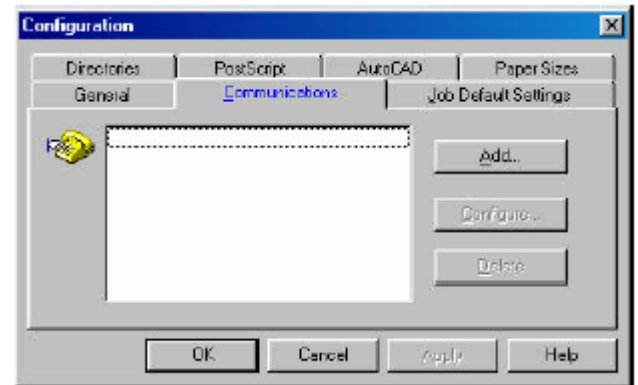
17. The installation is now complete. You may be asked to restart your computer at this point. Select “Yes, I want to restart my computer now” and click “Finish” to continue.



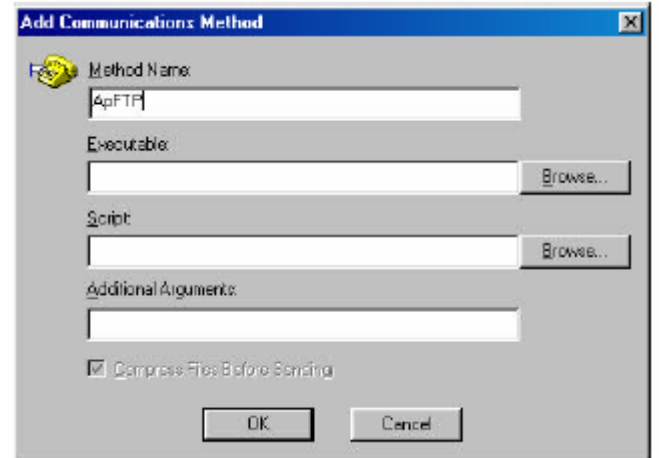
18. When you run Reprodesk for the first time, you must configure the default communication parameters. Go to the “Configure” menu and click “Defaults...”



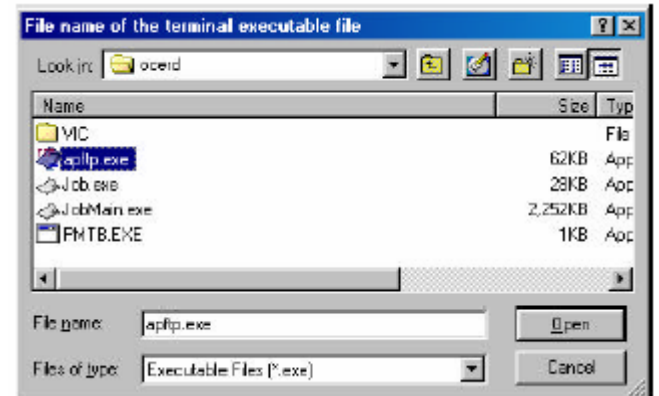
19. Click on the “Communications” tab, and then click the “Add...” button.



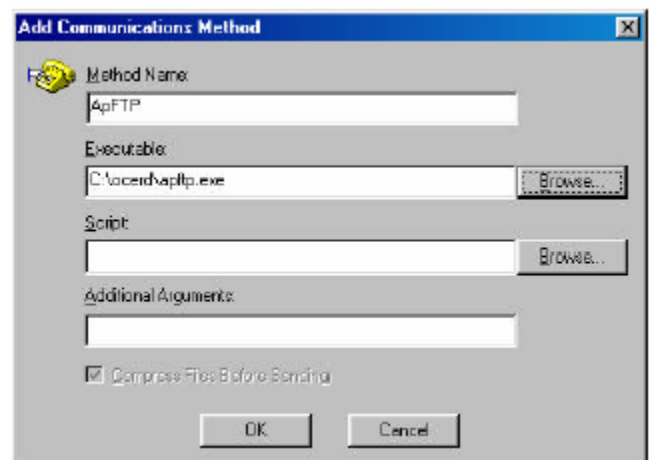
20. In the “Add Communications Method” window, type “ApFTP” in the space under “Method Name:”, then click the “Browse...” Button to the right of the “Executable:” field.



21. Select the file “apftp.exe” and click “Open”. NOTE: If you can’t see this file in the current list, then you may have to browse to it. It’s located in the folder “c:\ocerd”.

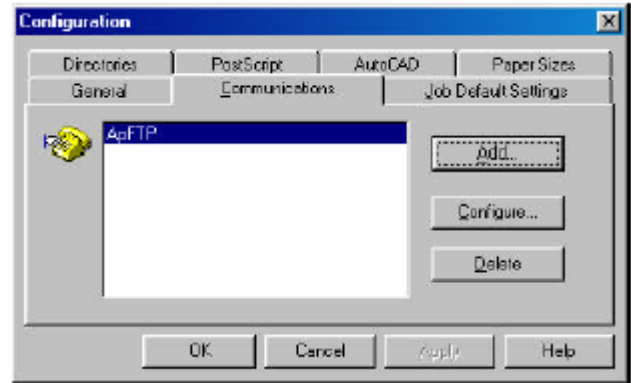


22. You then return to the previous window, but this time “c:\ocerd\apftp.exe” is shown in the space under “Executable:” The remaining two fields in this window can be left blank. Click “OK” to continue.



23. You finally return to the “Configuration” window, which should show “ApFTP” in the space next to the telephone icon.

Configuration of the Reprodesk communication parameters is now complete. Click “OK” to continue.



Finally, when you’re ready to send a job, you must select the communications method. To send a job, click the “Send Job” button.



Click the radio button beside “Modem” and select “ApFTP” from the pull-down menu. This selection will be remembered by the software, so in the future you’ll only have to click “OK”.

Click OK to continue.



The “Job Information” window is where you specify all the details of your order. This concludes the installation instructions for Reprodesk 1.67. Please refer to the file “c:\ocerd\manual.pdf” for detailed information on how to use the software.

